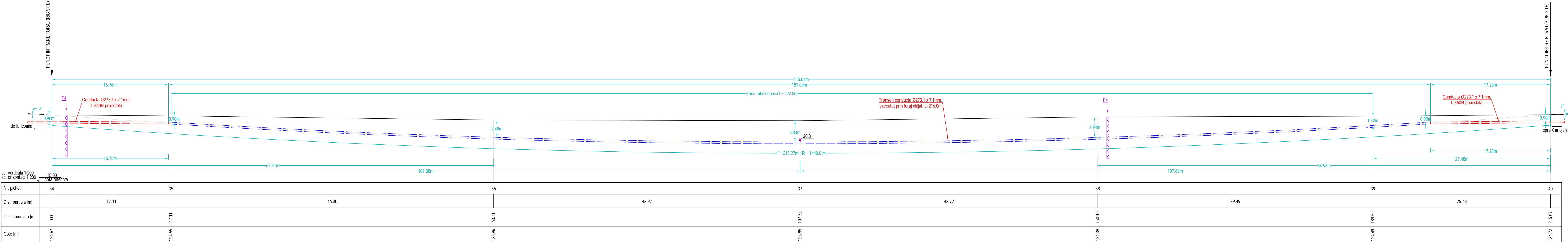


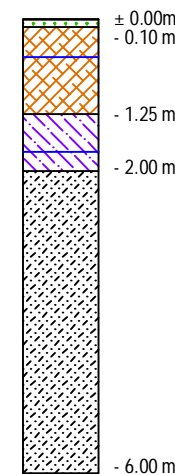
Detaliu traversare zona mlastinoasa, cu conducta Ø10 3/4" proiectata, intre pichetii 34 - 40
scara 1:200



Nr. pichet	34	35	36	37	38	39	40
Dist. partiala [m]		17.11	46.30	43.97	39.49	25.48	
Dist. cumulata [m]	0.00	17.11	63.41	107.38	150.10	189.59	215.07
Cote [m]	124.67	124.55	123.96	123.85	124.39	124.49	124.72

FORAJ GEOTEHNIC NR. 4

- 0.50 - 1.25 m
infiltratii de apa



LEGENDA FORAJ GEOTENIC NR. 4

- sol vegetal
- nisip fin praos galben cafeniu, cu apa, plastic moale
- praf nisipos argilos cafeniu, plastic consistent
- argila prafoasa cafenie, plastic vartoasa

In foraj au fost intalnite infiltratii de apa pe intervalul 0,50 – 1,25 m.

Coordonate STEREO 70 intrare / iesire foraj
conducta proiectata

Descriere punct x y
Intrare foraj (pich. 34): 322128.048 538294.689
Iesire foraj (pich. 40): 322120.548 538509.630

Verificator/ Expert	Nume	Semnatura	Cerinta	Referat / Expertiza Nr. / Data
S.C. SNIF PROIECT S.A. Targoviste Numar de inmatriculare J15/925/2005			Beneficiar: CONPET S.A. PLOIESTI	
Specificatie	Nume	Semnatura	Scara: 1:200	Pr. nr. 361/2018
Sef proiect	Ing. Costea Paul			Faza PT+CS+DE
Desenat	Ing. Radu Florin		Data: 2018	Pl. nr. 6
Proiectat	Ino. Matei Benone			
			Detaliu traversare zona mlastinoasa, cu conducta Ø10 3/4" proiectata, intre pichetii 34 - 40	